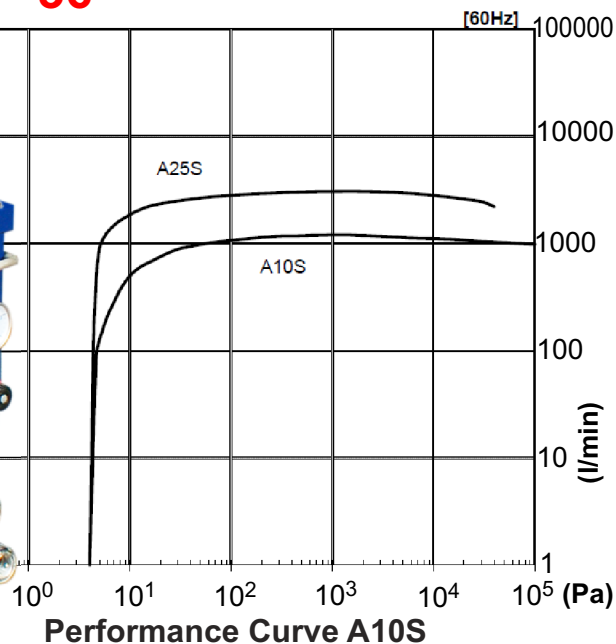


Chemtech Scientific provides access to this content as a courtesy.  
 We do not own the content contained in this document.  
 All rights and credit go directly to its rightful owners.  
 www.chemtechsci.com  
 Call us at: 484-424-9415



60HZ 50HZ  
**CFM 42 36**



# A10S

## MULTI-STAGE DRY PUMP

### A10S Specifications

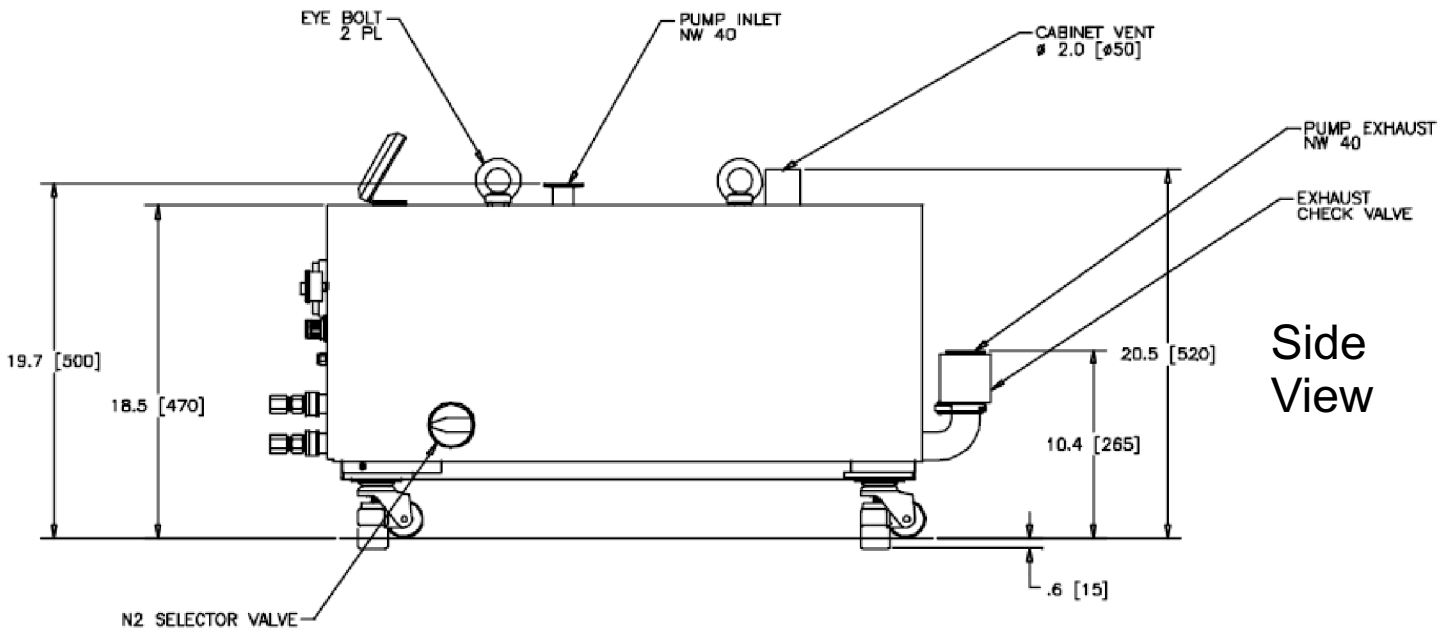
Pumping speed (N2) 50/60 Hz	l/min.	1000/1200
Pumping speed (N2) 50/60 Hz	m <sup>3</sup> /h	60/72 = <b>CFM 36/42</b>
Ultimate pressure 50/60 Hz	mbar	5x10 <sup>-2</sup> /4x10 <sup>-2</sup>
Ultimate pressure 50/60 Hz	Pa	5.3/4.0
Water Consumption	l/min.	3.5
Nitrogen Consumption	SLM	10-12
Nitrogen Consumption	Pa m <sup>3</sup> /sec	17-20
Voltages ranges	V	200-220/380-415
Motor power, installed	kW	2.2
Weight, approx.	kg/lbs	220 / 484
Sizes (LxWxH)	mm	840x394x470
Inlet flange size		DN 40 KF
Outlet flange size		DN 40 KF

### Technical Characteristics

- Complete pump safeguard system
- High pump operating temperature preventing condensation
- Low noise and low vibration
- Corrosion resistant materials-stainless steel coolers, water circuits
- High reliability even for harsh processes
- Efficient interstage coolers for LPCVD nitride process
- Canned motor
- Low service requirements
- Control panel for monitoring operating conditions

### Customer Benefits

- Very low nitrogen consumption for purging
- Clean room compatible
- Low service requirements
- Compact size and small footprint



# A10S

## MULTI-STAGE DRY PUMP

